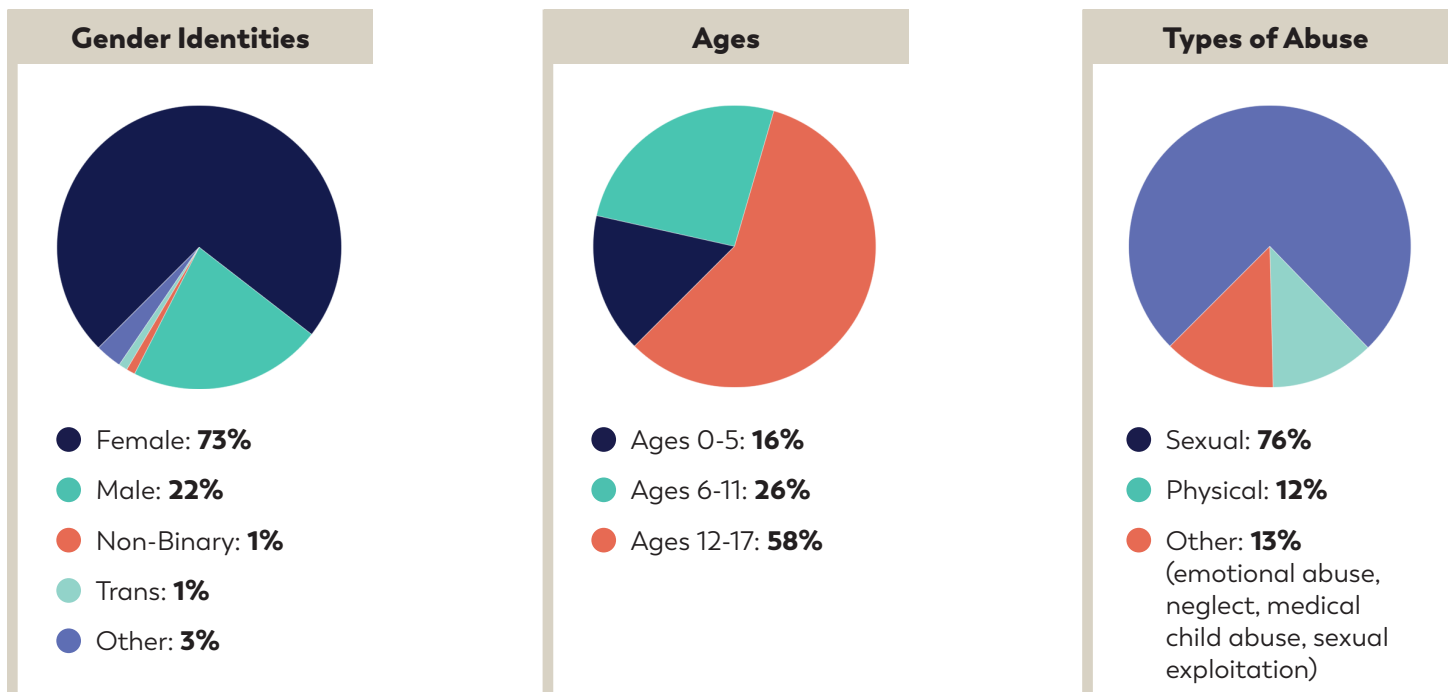




In 2021/22, Luna supported **2,732 children, youth and families** impacted by abuse.

This includes **1,107** new victims; **775** children, youth and families from previous years; **533** parents/caregivers; and **317** siblings. The number of new victims represents a **15% increase** from the previous year while support for ongoing files is up by almost **30%**.



Luna received a total of **3,999 REFERRALS** across all Partners and Programs in 2021/22. This includes **848** referrals to the Joint Investigative Child Abuse Team of Calgary Police Service, Children's Services, Alberta Health Services; **387** RCMP files; **2,124** referrals to the Child at Risk Response Team (CARRT); **318** to the Alberta Vulnerable Infant Response Team (AVIRT); and **322** to the Prenatal Outreach Support Team (POST).

**1,213 FORENSIC INTERVIEWS** were conducted by the Forensic Interview Specialist, Calgary Police Service, Children's Services, and the RCMP.

Luna supported **8** successful testimonies in our **REMOTE TESTIMONY ROOMS**.

Luna's **FACILITY DOGS**, Axel and Webster, supported children and families through **236** meet and greets, forensic interviews, Prosecution meetings, and court appearances: an **84% increase** over the previous year.

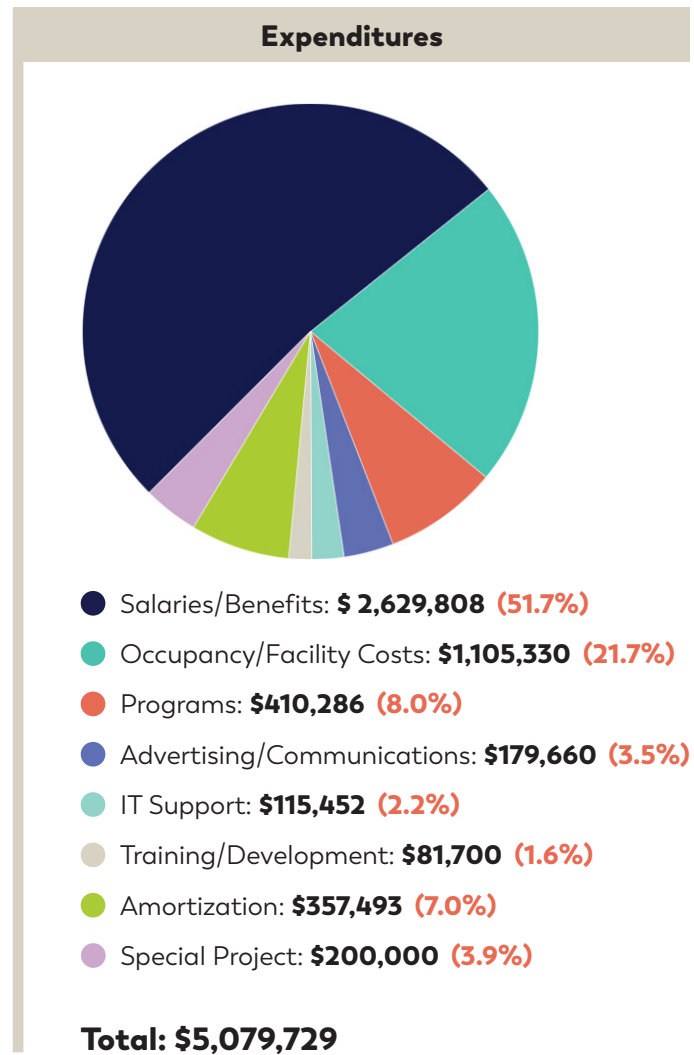
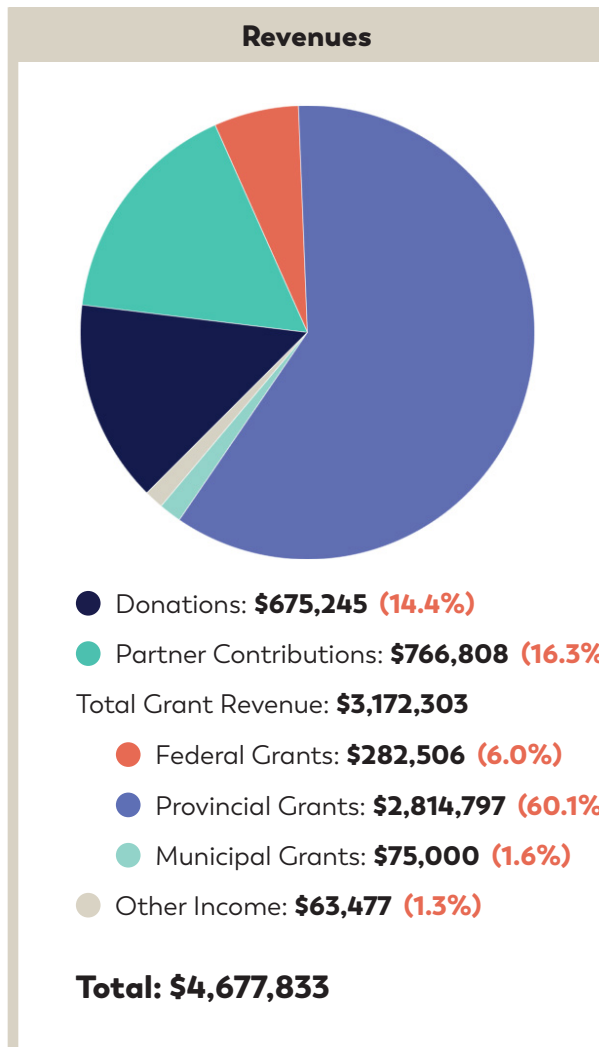
**CHILD LIFE** helped **802** children and youth through interviews and medical exams ensuring they felt informed, comfortable, safe and supported.

A total of **3,594** individuals visited Luna's **CHILD SPACE** in the past year, including victims, caregivers, siblings and external professionals.

With the support of Calgary Board of Education and Calgary Catholic School District, we ensure educators are connected to Luna, have the support and resources they need, and that children and youth who come to the Luna Centre are supported in their schools. Luna's **EDUCATION** Liaison consulted on **63** cases of child abuse and made **32** presentations to schools.

**86 VOLUNTEERS**—including Victim Support Advocates, Child Space Volunteers, Board Members, dogs and handlers from PALS, knitters, quilters, event volunteers, and organizations in the community—contributed close to **6,000** hours of volunteer service.

## FINANCIAL HIGHLIGHTS



## LUNA'S CORE PARTNERS

Alberta Health Services  
 Alberta Justice and Solicitor General  
 Calgary Police Services  
 Children's Services  
 Royal Canadian Mounted Police

