



Together,  
we have a  
greater impact

Community Report  
2016-17



sheldon kennedy child advocacy centre

# Making a bigger difference for children, youth, families by working together

*The powerful and passionate alliance forged four years ago at the Sheldon Kennedy Child Advocacy Centre shows every day how much is possible when a courageous child advocate, professionals and the community work together to help children, youth and families overcome the trauma of abuse.*

**6,038 infants, children and youth**  
assessed since 2013

*In 2016–17, 1,461 infants, children and youth found hope, help and healing when they needed it most, and took life-changing steps on their journeys toward healthy, productive lives.*

The Centre, in partnership with the Calgary Police Service, Calgary Region Children's Services, Alberta Health Services, Alberta Justice Calgary Crown Prosecutor's Office, the RCMP, Alberta Education, Treaty 7 and the University of Calgary continues to strengthen a model of collaboration that sets the standard for responding to the urgent issue of child abuse — and proves that our collective impact is greatest when we come together as one.

This Community Report highlights some of the many initiatives over the past year which enable the Sheldon Kennedy Child Advocacy Centre to do the greatest good for the people it serves.

## Leading toward a provincial model

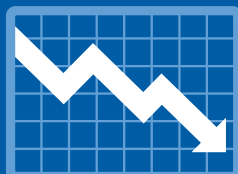
The SKCAC continues to play a lead role in transforming Alberta's province-wide response to child abuse, working with the Ministries of Children's Services, Justice and Solicitor General, Health and Education, as well as Zebra Child Protection Centre and Cairbou Child & Youth Centre to map out a plan to roll out the Provincial Model of Integrated Practice.

A two-day symposium June 15–16, 2016, helped inform and shape the integrated approach. More than 200 people — politicians, government staff, community agency representatives, police, teachers, social workers, physicians, nurses, First Nations members and individuals developing Child Advocacy Centres in the province — took part. Four new CACs were announced for development in the province, in addition to the three already established.



**Wrap-around supports** ensure children don't 'fall through the cracks'

**60% decrease** in the therapy services waitlist



Medical exams are **50% shorter** because interventions and preparation are trauma informed



**90%** of children and youth are **interviewed once**. Joint assessment/investigation increases efficiency and reduces child/family stress



Children and youth are **safer** because professionals can access medical specialists more quickly

## ■ Forging groundbreaking relationships with First Nations

A historic Memorandum of Understanding signed by the Tsuut'ina Nation and the SKCAC at the Nation's Treaty Day on June 28, 2016, will see new protocols developed to ensure Aboriginal children, youth and families impacted by abuse have access to specialized, timely and appropriate services at the Centre and within their communities. The SKCAC was also invited to work with the First Nations Health Consortium, which was created by the Bigstone Health Commission, Kee Tas Kee Now Tribal Council, Maskwacis Health Services and Siksika Nation to develop an enhanced service coordination plan by spring 2018.



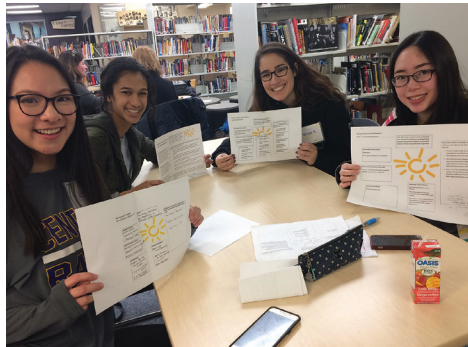
## ■ Growing support for victims of abuse

The value of collaboration is seen in the increasing number of people benefiting from the Victim Support Program, which is seeing a higher number of referrals from partners and external organizations as the program matures. In 2016–17, 998 people were assisted. The number of court updates increased dramatically, from 142 in 2015 to more than 850 in 2016–17. In 2017–18, the SKCAC will further enhance the program by increasing the capacity to work with First Nations police and victim service units.

More victims receive care and support

## ■ Showcasing youth inspiration and leadership

On May 19, 2016, the voices of youth were raised through student-led and produced multimedia productions — thoughtful, powerful and inspirational public service announcements (shared on YouTube) to raise the awareness of abuse and rally support. This highly anticipated event featured a world café format to prompt open and candid discussion, and Youth Champions from 13 school districts showed why they are leaders within their communities.



Critical case information is **shared** across partner agencies **within minutes or hours** instead of weeks

**Re-traumatization** is **reduced** by higher quality forensic interviews that minimize the need to re-interview



For every hour of client therapy, **collecting information** takes **75% less time** than before



SKCAC focuses on the **most complex** **15%** of child abuse cases





## ■ Making a difficult time easier

Recognizing the heavy toll abuse takes on children, youth and families, the SKCAC offers wraparound services to ease stress and minimize system-induced trauma. On average, there were 254 visits by children to the Child Space each month in 2016–17 (13% of whom were siblings of clients) — a 52%

The Child Space  
marked its  
**10,000th visit**  
in 2016–17



increase

over when the Centre opened in 2013.

Perhaps of greatest comfort is Webster, the facility dog who joined the SKCAC on March 13, 2017, to offer a consistent, supportive presence to children, youth and families. Webster was trained in his important role by the Dogs With Wings Assistance Dog Society in Edmonton, and will be joined in his important work by a second dog, Axel, in June 2017.

## ■ Widening knowledge about child abuse

Growing and sharing knowledge about child abuse — including prevention, the impact of trauma and the integrated practice model — remains a key focus of the SKCAC. Activities in over the past year included:

- a new partnership forged in November 2016 with signing of a Memorandum of Understanding with the University of Calgary Mathison Centre for Mental Health Research and Education to look at the impact of child abuse on the developing brain. The goal is to use a scientific approach to understand which interventions work best to mitigate the impact of child abuse, to compare the impact of childhood sexual abuse to that of other forms of childhood trauma and to understand why some children are more resilient than others
- a grant from the Public Health Agency of Canada to develop an online training program to expand knowledge of child maltreatment and trauma across professional and general audiences. Full implementation is planned by May 30, 2018
- developing a video to give school staff and frontline service providers a better understanding of their responsibility to recognize and report child abuse. The video will be complete in fall 2017
- developing a shared data system to better understand who the SKCAC serves and the issues they face, in order to provide the best interventions for the child

## ■ Unleashing the power of story

On June 15, 2016, the SKCAC hosted the Calgary premiere of *Swift Current*, the personal and poignant documentary telling Sheldon Kennedy's profoundly moving story. A diverse audience of 1,700 attended to learn more, be inspired and focus on local action. September screenings of the film were also used to launch development of Child Advocacy Centres in Lethbridge and Red Deer, also attracting large, motivated audiences.

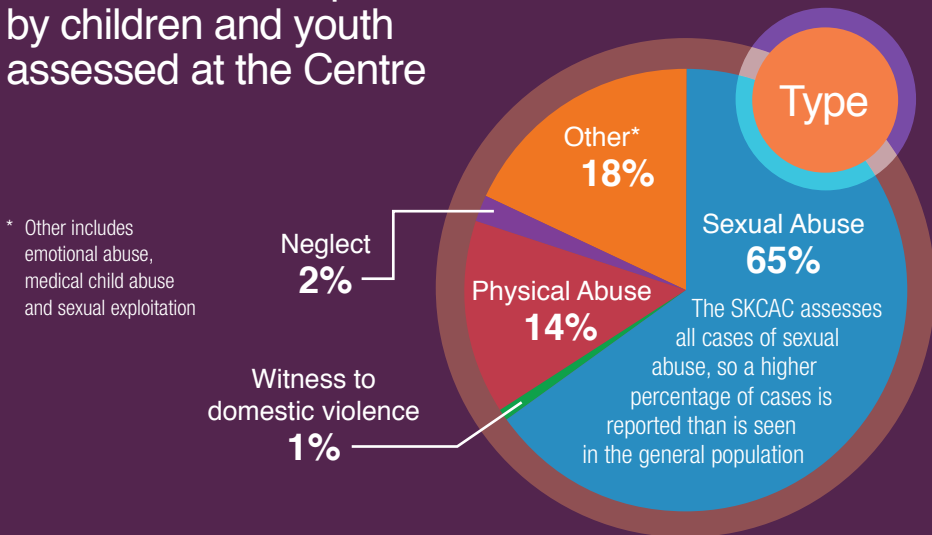


# 2016–17 Snapshot

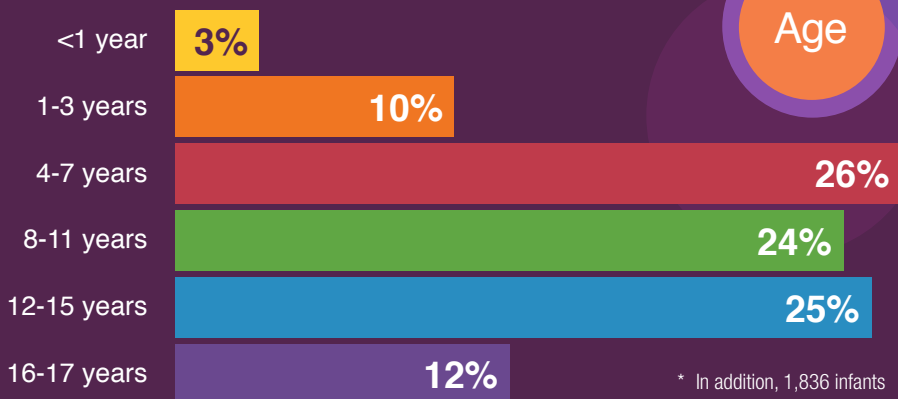
**1,461/year** **122/month**  
infants, children and youth assessed

**115+**  
professionals  
on-site

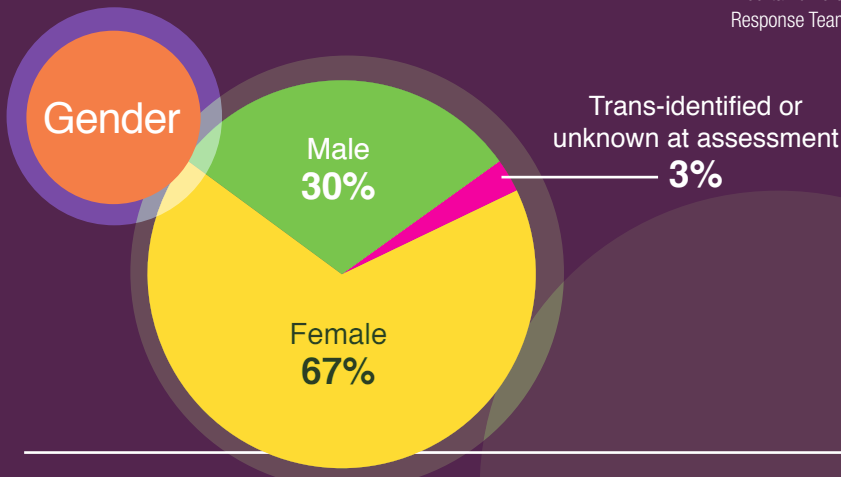
## Kinds of abuse experienced by children and youth assessed at the Centre



## Children and youth served



\* In addition, 1,836 infants were assessed through the Alberta Vulnerable Infant Response Team



## ■ Preventing abuse through early support

Referrals to the Prenatal Outreach Support Team (POST) continue to confirm the importance of this key initiative, which comprises a police officer, SKCAC outreach workers and public health nurses. In 2016–17, there were 329 referrals, and while this total is the same as the previous year, the pattern of referral is changing and there is notable growth from some community groups, such as court services, medical clinics and Children’s Services.

## ■ Evaluating the value, impact of the practice model

Measuring and assessing the efficacy of SKCAC’s integrated practice model is an ongoing priority to inform the decisions and actions of all partners — individually and collectively — to advance knowledge, refine approaches and, most importantly, offer the greatest benefit to children, youth and families. The SKCAC also moved forward to augment evaluation of social return on investment by defining key performance indicators for the Centre’s five strategic priorities and to support and measure the strategic operations plan.

## ■ Celebrating volunteers

Volunteers are indispensable to the Centre’s work. Many make invaluable contributions to Victim Support, the Child Space and PALS. Members of the community are also key to the success of events and many other support initiatives. In 2016–17, volunteers generously contributed more than 2,200 hours of time to the SKCAC.



*Volunteers take part in MEG Decorating Night to bring holiday cheer to the Centre*

*‘It’s up to us, as a system, as the community, to make sure we don’t lose a child or youth who has been abused to our streets, or to the prison system, or to suicide.*

*The most important thing is that we, as a community wrap around the entire family and make sure they get the help they need to move beyond being a victim and into a place that allows them to have the life they dream of.*

*Once abuse is disclosed — and children, youth and families start getting the help they need — then the journey of healing begins.’*

Sheldon Kennedy

## Board members, 2016–17

John Dielwart, Co-Chair  
Debra Mauro, Co-Chair  
Trent Edwards  
Brian Evans  
David Evans  
Margaret Fullerton  
Sheldon Kennedy  
Tom Mauro  
M. Ann McCaig

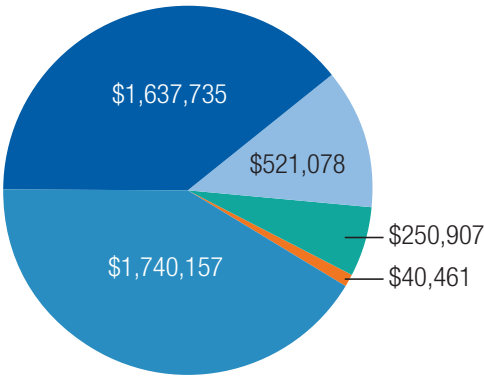
Wayne McNeil  
Melinda Park  
Anita Poscente  
Jon Reeves  
Suzanne Kendall  
Murray Stooke  
Gary Strother  
Grand Chief Charles Weaselhead  
Bonnie Johnston, CEO

# Financial highlights 2016–17

## Statement of Financial Position

	as at March 31	
	2017	2016
<b>Assets</b>	\$	\$
<b>Current</b>		
Cash	2,172,604	2,052,012
Short-term investments	2,568,099	1,106,495
Accounts receivable	427,299	110,391
Prepaid expenses	49,719	51,353
	5,217,721	3,320,251
<b>Long-term investments</b>	-	1,000,029
<b>Capital assets</b>	1,902,047	2,344,612
	1,902,047	3,344,641
	7,119,768	6,664,892
<b>Liabilities and Net Assets</b>		
<b>Liabilities</b>		
Accounts payable and accrued liabilities	567,042	429,890
Deferred contributions	839,935	628,917
	1,406,977	1,058,807
<b>Net assets</b>		
Invested in capital assets	1,902,047	2,344,612
Unrestricted net assets	3,810,744	3,261,473
	5,712,791	5,606,085
	7,119,768	6,664,892

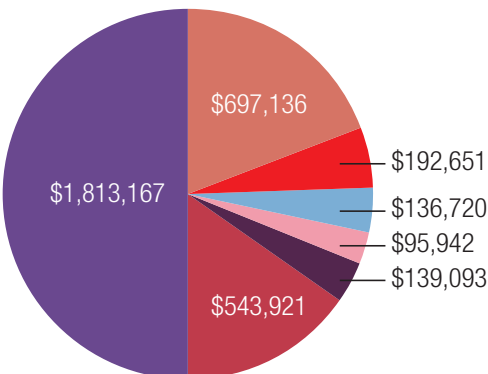
Complete audited financial statements are available by contacting the Sheldon Kennedy Child Advocacy Centre.



### Revenues

**\$4,190,338**

- Donations
- Partner contributions
- Grant revenue
- Fundraising contributions
- Other income



### Operating Expenditures\*

**\$3,618,630**

- Salaries and benefits
- Occupancy costs
- Fundraising and donations
- Program development and evaluation
- Advertising and communication
- IT support
- Other (office, professional fees, training & development)

\* excluding amortization costs

# A community makes a difference

Financial support from the entire community — individuals, corporations, foundations, government and more — enables the Sheldon Kennedy Child Advocacy Centre to improve the lives of children, youth and families impacted by abuse. It fuels the collaborations and partnerships essential for delivering life-changing results. **Thank you!**



**sheldon kennedy child advocacy centre**

400, 3820 – 24 Avenue NW, Calgary, AB T3B 2X9 403.428.5400



facebook.com/SheldonKennedyChildAdvocacyCentre



@SKCAC

Charitable Registration #: 82679 3283 RR0001